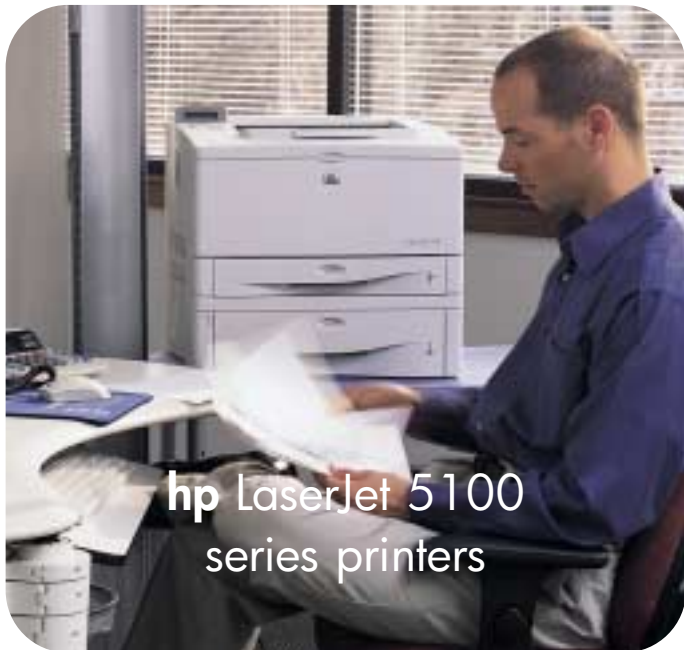
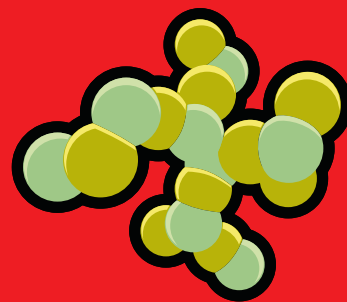


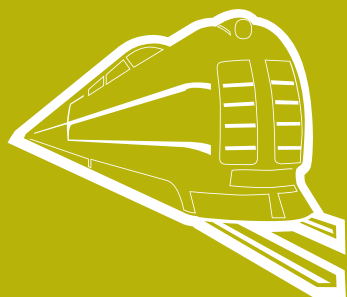
A3 monochrome  
laser printer



hp LaserJet 5100  
series printers



networkable



high performance



**your  
reliable work  
companion**

## **hp LaserJet 5100 series printers 5100 • 5100tn**

### **your reliable work companion**

Designed and engineered for CAD, desktop publishing, finance, geographical business environment and other general office applications, the HP LaserJet 5100 series printers provides fast and professional wide format (up to A3 size) laser printing that is reliable and networkable. Flexible media handling capabilities means that the HP LaserJet 5100 series prints on a wide range of media type and sizes. Networkable and expandable, it delivers high quality printing either as a standalone or network printer.

The HP LaserJet 5100 series printers are suitable for:

- Design environments such as CAD, desktop publishing & geographical business environment
- General office environments

Reliable and affordable, the HP LaserJet 5100 series printers provide professional laser quality black and white printing that is flexible and efficient for environments that require fast wide format printing (up to A3 size).



**a powerful  
print solution**



## **performance**

### **efficient print speed and superior print quality**

- the HP LaserJet 5100 series printers deliver crisp and sharp laser quality black and white documents at an efficient speed with first page out in less than 13 seconds

The HP LaserJet 5100 series printers print up to 22 ppm (A4 size) and 11 ppm (A3 size)

- HP RE† (Resolution Enhancement Technology) ensures high quality resolution of ProRes 1200 (1200 x 1200 dpi)
- auto-switching of HP PCL6, PCL 5e, HP-GL/2 and Postscript® 3™ emulation ensures accurate and quality printing

### **reliable and expandable**

- the 300 MHz processor and 16 MB RAM (32 MB RAM on 5100tn) facilitate efficient processing of print jobs
- HP LaserJet 5100 and 5100tn are expandable up to 400 MB RAM and 416 MB RAM respectively through three industry-standard DIMM slots
- the HP LaserJet 5100 series printers have a duty cycle of 65,000 pages-per-month, thus ensuring durability and uninterrupted workflow

## **value**

### **affordable**

- the HP LaserJet 5100 series printers have the capability to process wide format (A3 size) print jobs and deliver robust printing at an affordable price
- maximise productivity with custom management solutions—expand your business capabilities with open DIMM slots for custom printer management solutions including internet-enabled features such as supplies ordering, job storing, and printing e-services

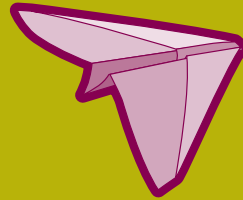
### **user-friendly**

- the HP LaserJet 5100 series printers can be added to any office network quickly and efficiently
- the intuitive control panel ensures easy operation of the printer, thus allowing users to gain access to it quickly and efficiently
- the HP LaserJet 5100 series printers can be easily customised to meet the printing needs of users—they can act as standalone wide format (A3 size) printers to manage small-to-medium workloads or as network capable printers to be shared among a large workgroup



**value**

flexibility



### networkable

- the HP LaserJet 5100 series printers facilitate complete network sharing with the 10/100Base-T Jetdirect networking card (optional on 5100), thus ensuring work efficiency and preventing printing log jams
- the embedded Web server enables users to manage the printer more efficiently by providing access to internet-enabled features such as supplies ordering, job storing and e-services (e.g. printer alerts and status messages) via the DIMM slot
- the HP LaserJet 5100 series printers are compatible with various operating systems and network operating systems, thus ensuring ease of use and complete convenience for users

The HP LaserJet 5100 series printers support Microsoft® Windows 95, Windows 98, Windows NT® 4.0, Windows 2000, Windows Me, Windows XP; AutoCAD 12/13/14/15 and Mac® 9.0, 9.4, 9.1, X.

This range of printers is compatible with various network operating systems such as Microsoft Windows 95, NT 4.0, Windows XP; Netware; IBM OS/2 Warp; LAN manager, UNIX®; AppleTalk; Linux®; HP-UX; and LocalTalk via HP Jetdirect EIO print servers

- connectivity via IEEE 1284-compliant parallel. Other standard connectivity options include two EIO slots 802.11 Internal Wireless connectivity card

### versatile paper handling

- the HP LaserJet 5100 series printers handle a wide range of media types and sizes giving you the convenience of media flexibility

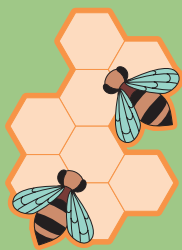
The multi-purpose tray (Tray 1) has a 100-sheet capacity and handles media sizes ranging from 3 x 5" to 12.8 x 18.5". Tray 2 has the capacity to hold up to 250 sheets and handles media sizes ranging from 5.8 x 8.3" to 11.7 x 17". Both trays come standard for all models

An optional Tray 3 holds up to 250 sheets and Tray 4 holds up to 500 sheets (optional on 5100 and standard on 5100tn). Both trays facilitate high-capacity printing, thus minimising user intervention. The output tray holds up to 250 sheets

The HP LaserJet 5100 series printers support media sizes, which include A4, A3, legal, executive and no. 10 envelopes

Supported media types include paper (plain, letterhead, pre-punched, bond, colour, rough, vellum, pre-printed and recycled), transparencies, labels, envelopes and card stock

An optional auto-duplex unit enables printing on both sides of paper, thus reducing costs for users



networkable

## hp LaserJet 5100 series hp 5100tn shown

easy operation  
via intuitive  
control panel

two EIO slots  
for multiple  
connectivity  
options  
(internal)



100-sheet  
multipurpose tray

high-capacity  
printing with 250-  
sheet and 500-  
sheet feeder tray

### product highlights

- fast black-and-white printing—22 ppm A4-size documents and 11 ppm for A3-size documents
- high-quality printing—up to 1200 x 1200 dpi resolution
- robust processing power—all printers come with a 300 MHz processor and 16 MB of RAM (32 MB on 5100tn model), expandable to up to 416 MB (400 MB on 5100 model)
- accurate printing—via automatic switching of hp PCL6, PCL 5e, HP-GL/2, and PostScript® 3 emulation
- network ready 10/100Base-T hp jetdirect networking card (optional on 5100 model)
- add internet-enabled services—via embedded web server DIMM

### hp LaserJet 5100 printer

- 16 MB RAM
- 300 MHz processor
- 100-sheet multipurpose tray
- 250-sheet feeder tray

### optional accessories

- up to 400 MB RAM
- 10/100Base-T networking card
- additional 250- and/or 500-sheet feeder tray
- auto-duplex accessory
- Embedded Web Server via DIMM slot
- >4 GB hard disk

### hp LaserJet 5100tn printer

- 32 MB RAM
- 300 MHz processor
- 100-sheet multipurpose tray
- 250-sheet feeder tray
- 500-sheet feeder tray
- 10/100Base-T networking card

### optional accessories

- up to 416 MB RAM
- additional 250-sheet feeder
- auto-duplex accessory
- Embedded Web Server via DIMM slot
- >4 GB hard disk

## technical specifications

### hp LaserJet 5100 series

- Duty cycle: 65,000 pages per month
- Print speed: 22 pages per minute, A4-size documents;  
11 pages per minute, A3-size documents
- First page out: 13 seconds
- Resolution: ProRes1200 (1200 x 1200 dpi),  
REt (Resolution Enhancement Technology)

#### LaserJet 5100 printer

- Memory: 16 MB memory, expandable to 400 MB through  
three industry standard DIMM slots
- Processor: 300 MHz
- Connectivity: IEEE1284-compliant parallel, 2 open EIO slots  
(standard); HP Jetdirect internal print server;  
802.11 Internal Wireless connectivity card (optional)
- Dimensions (w x d x h): 18.7 x 22.8 x 18.6" (14.7 x 48 x 47.3 cm)
- Weight: 50 lb, (23 kg)

#### LaserJet 5100tn printer

- Memory: 32 MB memory, expandable to 416 MB through  
three industry-standard DIMM slots
- Processor: 300 MHz
- Connectivity: IEEE1284-compliant parallel, 1 open EIO slot;  
HP Jetdirect (EIO) print server for Fast Ethernet  
10/100Base-TX in second slot (standard);  
802.11 Internal Wireless connectivity card (optional)
- Dimensions (w x d x h): 18.7 x 22.8 x 24.4" (14.7 x 48 x 62 cm)
- Weight: 75 lb, (34 kg)

#### paper handling

- Two sided printing: automatic with optional duplex accessory
- Input trays: Tray 1: 100-sheet capacity (standard on all models);  
Tray 2: 250-sheet (standard on all models);  
Tray 3: 250-sheet (optional on LJ5100 and LJ5100tn);  
Tray 4: 500-sheet feeder (optional on LJ5100,  
standard on LJ5100tn)
- Output tray: capacity 250 sheets
- Media sizes: letter, legal, executive, tabloid, no. 10 envelopes  
custom sizes: 3 x 5" to 12.28 x 18.5"; Tray 2: letter, A4,  
executive, legal, B5 (JIS), A5, 11 x 17", A3, B4 (JIS)
- Media type: Paper (plain, letterhead, prepunched, bond, color, rough,  
vellum, preprinted, recycled), transparencies, labels,  
envelopes, and card stock

#### printer language

- HP PCL 6, HP PCL 5e, HP-GL/2, PostScript® 3 emulation operating systems  
supported Microsoft® Windows 95, Windows 98, Windows, NT® 4.0,  
Windows 2000, Windows Me, Windows XP; AutoCAD 12/13/14/15,  
Mac® 9.0, 9.4, 9.1, X network compatibility Microsoft Windows 95, NT 4.0,  
Windows XP; Netware; IBM OS/2 Warp; LAN manager; UNIX®; Appletalk;  
Linux®; HP-UX; LocalTalk via HP Jetdirect EIO print servers

#### font capabilities

- 80 built-in scalable PCL, 80 internal Postscript

#### environmental ranges

- Operating temperature: 50 to 91 ° F (10 to 32 ° C)
- Storage temperature: -32 to 104 ° F (0 to 40 ° C)
- Operating humidity: 20 to 80% RH
- Storage humidity: 10 to 80% RH

#### acoustics

- Printing 22 ppm: 6.6 dB(A)
- Printing 11 ppm: 6.3 – 6.2 dB(A)
- Power save: 4.4 – 0 dB(A)

#### power requirements

- Source: minimum recommended 100 to 127 VAC, 10.5 amps;  
220 to 240 VAC, 5.3 amps
- Frequency: 50 – 60 Hz

#### power consumption

- Printing: 325 – 330 watts average
- Standby (ready state): 30 watts average
- ENERGY STAR® compliant
- Powersave mode: <30 watts

#### contents

- Printer; power cord, print cartridge, printer documentation,  
control panel overlay, printer software and online user guide CD

#### warranty

- 1 year return-to-HP warranty
- Warranty varies according to countries. Please double check with your local  
Hewlett-Packard sales office or your nearest HP authorised dealer for details.

## further information

For more information on the HP LaserJet 5100 series, visit our Web site at <http://www.hp.com> and click on products and services. Here you will find information on products, supplies, and accessories for all your computing needs. HP peripherals, personal computers, supplies, and accessories are available at authorised HP resellers worldwide.

For more information, call your local Hewlett-Packard sales office or your nearest HP authorised dealer:

### hp customer information centre (for product information)

Australia	132347
China	+86 10 6564 5858
Hong Kong	+852 2599 7066
India	+91 11 9628 123 123
Indonesia	+62 21 579 00323
Korea	+82 2 3270 0720
Malaysia	+60 3 2698 1111
New Zealand	+0800 733 547
Philippines	+63 2 636 9888
Singapore	+65 6 278 8100
	+1800 278 8100 (local toll free calls only)
Taiwan	+886 2 2717 0055
Thailand	+662 353 9000
Vietnam	+848 823 6215

### hp customer care centre (for post-sales service)

Australia	+61 3 8877 8000
China	+86 10 6564 5959
Hong Kong	+852 800 96 7729
India	+91 11 682 6035
Indonesia	+62 21 350 3408
Korea	+82 2 3270 0700
Malaysia	+60 3 2695 2566
New Zealand	+64 9 356 6640
Philippines	+63 2 867 3551
Singapore	+65 6 272 5300
Taiwan	+886 2 2717 0055
Thailand	+662 353 9000
Vietnam	+848 823 4530

For the following countries, please fax your queries to: +65 6 275 6707 • Bangladesh • Brunei • Cambodia • Pakistan • Sri Lanka

for more information on support, visit:

<http://www.hp.com/go/support>

for more information on hp supportpack, visit:

<http://www.asiapac.hp.com/supportpack>

for more information on hp genuine parts, visit:

<http://www.hp.com/go/hpparts>

All brands and product names are trademarks or registered trademarks of their respective companies.

All information is subject to change without any prior notice (E.&O.E.).

For warranties, please check with your local Hewlett-Packard sales office or your nearest HP authorised dealer for availability.

© Copyright Hewlett-Packard Company 2002

Printed in Singapore M03/2002

P/N: 5980-9025EEP

## ordering information

number	description
Q1860A	HP LaserJet 5100 printer
Q1861A	HP LaserJet 5100tn printer

### hp supportpack options<sup>1</sup>

H2657A/E	Return to HP, 3 years
H5479A/E	Next business day onsite, 3 years
H4475A/E	4 hour on-site, extended hours response, 3 years
U2040A/E	4 hour on-site response, 24 x 7, 3 years
U2888A	Maintenance Kit Replacement Service—deliver, replace MK Fuser (220)
H4513A/E	Installation for 1 personal or workgroup printer

### accessories

Q1864A	Duplex (two-sided) printing accessory
Q1865A	250-sheet paper feeder and cassette
Q1866A	500-sheet paper feeder and cassette
C1860-67902	New printer maintenance kit for 110 volt printer
C1860-67903	New printer maintenance kit for 220 volt printer
C1860-69002	Exchange printer maintenance kit for 110 volt printer
C1860-69003	Exchange printer maintenance kit for 220 volt printer
C1860-90918	Service manual
J6054A	>4 GB EIO hard disk
C9129B	Embedded Web Server (EWS) DIMM

### supplies

print cartridges  
C4129X

Black print cartridge

### media

92296U	HP LaserJet monochrome transparencies 50 sheets, A4
C4179B	HP LaserJet soft gloss paper, 200 sheets, A4
C2936A	HP LaserJet color transparencies, 50 sheets, A4
92296U	HP LaserJet monochrome transparency, A4
Q1298B	HP LaserJet tough paper, 50 sheets, A4

### memory

C4140A	4 MB SDRAM DIMM
C7842A	8 MB SDRAM DIMM
C7843A	16 MB SDRAM DIMM
C7845A	32 MB SDRAM DIMM
Q9680A	64 MB SDRAM DIMM
Q9121A	128 MB SDRAM DIMM
C4286A	2 MB Flash DIMM
C4287A	4 MB Flash DIMM
C4292A	8 MB traditional Chinese MROM Font DIMM
C4293A	8 MB simplified Chinese MROM Font DIMM

### interface and cables

C2950A	Parallel cable, 2-meter IEEE 1284-B cable
C2951A	Parallel cable, 3-meter IEEE 1284-B cable

### network

J6057A	HP Jetdirect 615n EIO print server, 10/100Base-TX RJ-45 only
J6058A	HP Jetdirect 680n 802.11 wireless internal print server
J3111A	HP Jetdirect 600n EIO print server, Ethernet RJ-45 and BNC, LocalTalk
J4167A	HP Jetdirect 610n EIO Token Ring, RJ-45 and DB9
J4135A	USB, LocalTalk and Serial

<sup>1</sup>Please check with your local hp resellers for availability of other HP Supportpack option



ENERGY STAR is a U.S. registered service mark of the United States Environmental Protection Agency. As an ENERGY STAR partner, HP has determined that this product meets the guidelines for energy efficiency. Apple, and Macintosh are trademarks of Apple Computer, Inc. registered in the USA, and other countries. Microsoft, Windows, and Windows NT are registered trademarks of Microsoft Corporation in the USA, and other countries. UNIX is a registered trademark of the Open Group in the USA, and other countries. All other brand and product names are trademarks or registered trademarks of their respective companies. The information contained in this document is subject to change without notice. HP makes no warranty of any kind with respect to this information. HP specifically disclaims the implied warranty of merchantability and fitness for a particular purpose. HP shall not be liable for any direct, indirect, incidental, consequential, or other damage alleged in connection with the furnishing or use of this information.



i n v e n t